

# NEW ZEALAND SHORTHORN BEEF FLYER

## PRESIDENT'S MESSAGE

Dear Members,

With the Bull Sale season almost upon us and the Beef Expo rapidly approaching. I hope the weather patterns have been manageable for all Breeders.

With some breeders having a better than expected growing season hope everybody is heading into the winter with some feed ahead.

Council is planning a Central North Island Breed Tour in March next year, as part of the tour we are hoping to hold another Heifer Genetic sale. We will ask at the AGM for Breeders opinion on this.

Beef Expo is from 14th-17th May, we have a good entry of Bulls as well as two Heifers in the Sale. This year the Judge will be Australian President, Jason Catts. It will be great to find out what is happening in the Australian Shorthorn World.

Our AGM will be held in the Boardroom, PBBNZ at 10:30am on Monday 16th. A breed dinner will be held on the Monday night at Amayjen Restaurant, Fergusson Street, Feilding at 6:30pm. This will be a 3 course meal with the cost being \$55.00 per person. **Bookings are essential for the dinner.** Please RSVP to Lindy Lawrence at the office on 06 323 0742 or email [lindy@pbbnz.com](mailto:lindy@pbbnz.com) **by Wednesday 11th May 2016.**

I look forward to seeing you all in May.

Kind regards,  
**Craig Morton**  
PRESIDENT



## SHORTHORN REGISTRY NEWS

**DNA RULE - All sires used in stud, born from 2008 must be DNA profiled.** This needs to be addressed prior to calf entry to avoid delaying registrations. Hair collection envelopes are available from the Office.

**TRANSFER AUTHORISATION CERTIFICATES** are available from the Shorthorn website at [www.shorthorn.co.nz](http://www.shorthorn.co.nz) under Information and Download Forms. These can be printed, completed, signed and sent to the Office for processing.

**NOTE:** Animals sold at the EXPO are the vendor's responsibility to transfer.

**OUTLIERS** Some of you may have received outlier reports from your Group Run.

It is IMPORTANT that these outliers are verified with Shorthorn registry, to ensure the animal in question and its progeny are reinstated into the next analysis.

### LINDA SHAILER

Shorthorn Registry • Email: [lindas@pbbnz.com](mailto:lindas@pbbnz.com)

### OBITUARY

It is with sadness that we inform members of the recent passing of June Ody, wife of Will Ody from Glenrossie Stud in Whangarei. Sincere sympathy is extended to the Ody family.

## SHORTHORN UNIFORM



- Tailored Shirt** \$75
- Polo** \$45
- Hoodie** \$58  
with no back print
- Hoodie** \$78  
with Stud Logo screen printed on the back.

The first new Uniforms will be worn by the Council Members at the Beef Expo and orders will be taken at the Breed Dinner and AGM. To order talk to Craig or Maree.

Prices are GST inclusive but freight will be added.



**JACKET**  
Mens or Ladies

**\$120**



**VEST**  
Mens or Ladies

**\$85**

# 2016 TRU-TEST BEEF EXPO



## FUTURE BEEF NZ

The FBNZ programme runs on Saturday 14th and Sunday 15th May. On Saturday evening there is the "Country Extravaganza" at 5.30pm at Manfeild Stadium. Cam Scott, named the Best Male Artist at the 2015 Country Music Awards, will be performing. Tickets can be purchased at the door for \$25 per head.

## B+LNZ GENETICS BEEF FORUM

This will be held from 1.00pm-4.00pm on Sunday 15th May at Manfeild Stadium. The forum will cover a range of topics including the Beef Progeny Test, Genotyping, beef genetics for the dairy industry and maternal performance in beef cows. Dr Wayne Pitchford from the University of Adelaide will be speaking on the rise of Australian beef breeding including the Black Baldy, and Mt Linton's General Manager, Ceri Lewis will discuss their approach to genetics and how it has helped achieve some of the highest Beef EQ rates in New Zealand. This forum is an opportunity to share ideas with fellow breeders, talk to us directly about our genetics programme and have informative discussions on key issues, challenges and opportunities for the advancement of beef genetics in New Zealand. This event is free to attend but spaces are limited so you must contact Pamela Schofield on 03 477 6632 or email: [info@blnzgenetics.com](mailto:info@blnzgenetics.com) for more information.

## B+LNZ STEAK OF ORIGIN

The Steak of Origin dinner will be held at Awapuni Racecourse, Palmerston North on Sunday 15th May. For tickets contact Emily at B+LNZ on 09 489 7119 or email: [emily@beeflambnz.co.nz](mailto:emily@beeflambnz.co.nz)

## B+LNZ GENETICS BREAKFAST

7.30am-9.30am Manfeild Stadium  
There will be three guest speakers for this event. They are Dr Dorian Garrick who will be discussing 'The power of the New Zealand gene pool, for New Zealand' and 'Getting it right: data recording in the USA'. Dr Wayne

Pitchford will outline Australia's beef cow findings and Jim Johnson a specialist in cattle genetics from Zoetis USA will cover the topic of real world genomics in the USA.

This event is free to attend but spaces are limited so you must contact Pamela Schofield on 03 477 6632 or email: [info@blnzgenetics.com](mailto:info@blnzgenetics.com) to book your space.

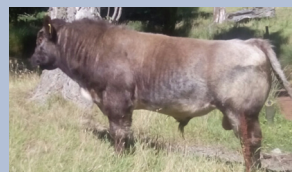
## SHOW & SALE

Shorthorn Led judging will take place at 1.15pm on Monday 16th May. The Allflex NZ Heifer Visual Class judging will take place at 3.30pm followed by the B+LNZ Genetics Heifer Performance Class. The Allflex NZ Heifer Championship will be held at 4.45pm  
Champion of Champions presentation begins at 10am on Tuesday 17th May. The sales begin at 10.45am with the Herefords and the Shorthorn sale follows on from this.  
The Allflex NZ Champion heifer sale will begin at 2.00pm following the lunch break.

## 1 STUD BULL FOR SALE

### Maerewhenua Rising Sun (Roan)

Herdbook No: 207714001



SIRE:  
Kilkee Rising Sun F02 (Imp Aus) (Roan)  
DAM:  
Maerewhenua Fancy 10003 (White)  
DAM'S DAM:  
Alta Cedar Perfect Storm 11U (Imp Can) (Roan)

Enquiries to Norm McKenzie: Phone: 03 431 2871

## SHORTHORN COUNCILLOR CONTACTS:

<b>President</b> .....	Craig Morton .....	<a href="mailto:mortons76@xtra.co.nz">mortons76@xtra.co.nz</a> .....	07 552 0250
<b>Vice President</b> .....	Russell Proffit .....	<a href="mailto:rmmwproffit@xtra.co.nz">rmmwproffit@xtra.co.nz</a> .....	07 877 8977
<b>Treasurer</b> .....	Jim Syme .....	<a href="mailto:hiwiroa@xtra.co.nz">hiwiroa@xtra.co.nz</a> .....	06 858 5369
<b>Councillors</b> .....	Anita Erskine .....	<a href="mailto:westwood.farm@xtra.co.nz">westwood.farm@xtra.co.nz</a> .....	03 226 6713
.....	Fraser Fletcher .....	<a href="mailto:fraserfletcher@gmail.com">fraserfletcher@gmail.com</a> .....	03 204 2052
.....	Ron Smith .....	<a href="mailto:clairon@farmside.co.nz">clairon@farmside.co.nz</a> .....	07 873 6968
<b>Breed Co-ordinator:</b> .....	Lindy Lawrence .....	<a href="mailto:lindy@pbbnz.com">lindy@pbbnz.com</a> .....	06 323 0742

## PBBNZ OFFICE CONTACTS:

<b>General Manager</b> .....	Caren Bailey .....	<a href="mailto:caren@pbbnz.com">caren@pbbnz.com</a> .....	06 323 0862
<b>Accounts:</b> .....	Andrea Bullivant .....	<a href="mailto:andrea@pbbnz.com">andrea@pbbnz.com</a> .....	06 323 0749
.....	Kaylene Bradley .....	<a href="mailto:kaylene@pbbnz.com">kaylene@pbbnz.com</a> .....	06 323 0748
<b>Administration:</b> .....	Lindy Lawrence .....	<a href="mailto:lindy@pbbnz.com">lindy@pbbnz.com</a> .....	06 323 0742
<b>Administration Assistant:</b> .....	Crystal Morgan .....	<a href="mailto:crystal@pbbnz.com">crystal@pbbnz.com</a> .....	06 323 0869
<b>Administration/Tags:</b> .....	Megan Ellett .....	<a href="mailto:tags@pbbnz.com">tags@pbbnz.com</a> .....	06 323 0861
<b>Registry/DNA:</b> .....	Linda Rule .....	<a href="mailto:lindar@pbbnz.com">lindar@pbbnz.com</a> .....	06 323 0746
<b>Registry:</b> .....	Linda Shailer .....	<a href="mailto:lindas@pbbnz.com">lindas@pbbnz.com</a> .....	06 323 0747
<b>Pivot Design:</b> .....	Adele Gray .....	<a href="mailto:adele@pivotdesign.co.nz">adele@pivotdesign.co.nz</a> .....	06 323 0864
.....	Glenn Morton .....	<a href="mailto:graphics@pivotdesign.co.nz">graphics@pivotdesign.co.nz</a> .....	06 323 0863
<b>Website Design:</b> .....	Nathan Doyle .....	<a href="mailto:nathan@pivotdesign.co.nz">nathan@pivotdesign.co.nz</a> .....	06 323 0868

**IMPORTANT CONTACTS**